

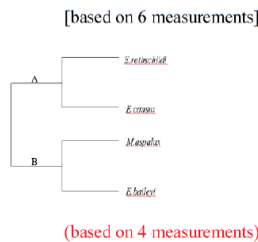
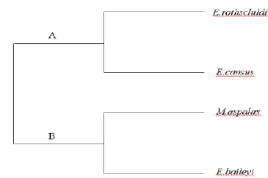
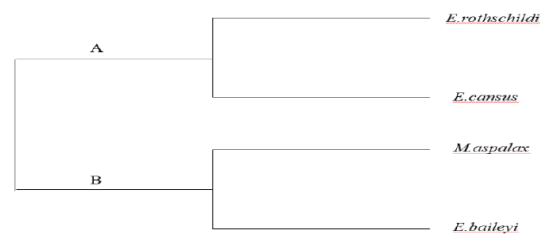
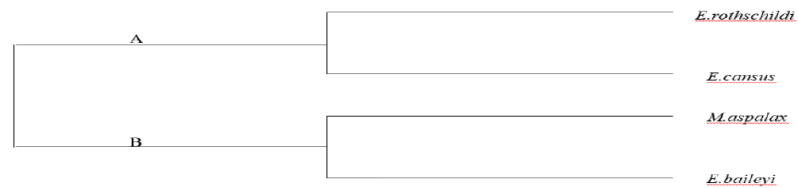


Supplementary Material

Skull Morphology of Four Species of Zokors (Rodentia, Myospalacinae)

Yao Zou, Shien Ren, Miao Xu, Nannan Liang, Xuxin Zhang, Chongxuan Han* and Xiaoning Nan*

Key Laboratory of National Forestry and Grassland Administration on Management of Western Forest Bio-Disaster, Northwest Agriculture and Forestry University, Yangling 712100, China



{(CL BL CB OS) LDL SFC} GMB LLJ LDU LUC BAB} B C L L L L C O S S Z
N H A L M N L W A P B
B B C P B U B C

Supplementary Fig. 1. The minimum number of linear measurements for cluster analysis in males

* Corresponding authors: 1139186993@qq.com;
358727493@qq.com
0030-9923/2022/0003-1037 \$ 9.00/0
Copyright 2022 Zoological Society of Pakistan

Supplementary Table I.- Information of zokor samples and the values of 22 measurements of skull.

Sample Type	Gender	CL	CB	BL	CH	BNB	LNB	ZB	LMP	OS	SAB	OWU	GMB	BAB	LAB	LLC	SFC	SFC	LUC	LDL	LLJ	LDU	OL	
319	<i>E. rothschildi</i> (XX)	M	43.45	39.5	41.43	15.08	8.9	19.1	31.1	20.35	7.03	4.7	9.1	20.93	8.63	10.815	10.81	3.48	7.07	10.595	5.275	25.19	14.005	16.1
225	<i>E. rothschildi</i> (XX)	M	38.5	35.71	36.72	13.95	6.52	15.15	27.66	19.05	5.52	4.91	8.75	17.79	8.69	11.125	10.33	2.97	5.98	10.155	4.645	22.69	12.225	13.66
224	<i>E. rothschildi</i> (XX)	M	39.6	35.95	37.62	13.92	7.27	16.26	27.52	19.85	5.29	4.85	8.78	19	9.025	11.975	10.2	3.11	5.52	9.825	4.675	23.285	12.305	14.06
322	<i>E. rothschildi</i> (XX)	M	40.91	36.89	38.62	14.4	7.62	16.1	27.74	21.74	7.35	3.98	8.7	18.98	9.85	10.7	10.305	5.09	8.74	10.13	5.025	22.86	13.33	14.68
354	<i>E. baileyi</i>	M	42.86	39.18	40.11	15.69	7.75	16.85	29.35	20.11	8.31	4.95	9.46	20.78	9.04	11.945	10.4	5.7	6.23	10.035	6.53	22.925	14.445	15.28
357	<i>E. baileyi</i>	M	44.57	40.62	41.64	16.27	8.18	18.31	33.29	21.65	8.4	6.14	9.86	21.01	9.375	12.11	10.875	4.35	4.72	10.08	6.5	26.51	15.25	15.64
355	<i>E. baileyi</i>	M	44.32	40.58	42.52	16.95	8.12	17.98	33.49	21.44	7.97	6.05	10.12	21.05	9.11	11.72	11.095	2.96	3.11	10.35	6.78	25.95	15.27	16.85
78	<i>E. cansus</i>	M	45.15	40.72	43.51	17.42	7.42	17.66	32.62	24.62	6.80	4.20	9.24	21.72	8.89	11.49	11.765	3.53	4.95	11.59	5.735	27.92	15.26	16.86
80	<i>E. cansus</i>	M	45.45	40.39	42.98	16.98	7.31	16.57	32.16	24.03	6.98	3.84	9.88	20.63	8.515	11.465	11.605	3.17	5.33	11.18	5.47	27.655	14.58	18.03
81	<i>E. cansus</i>	M	45.66	40.98	43.21	16.92	6.96	13.59	32.33	20.42	8.61	5.56	8.46	22.35	8.455	11.38	10.865	6.09	8.61	10.145	5.6	24.035	12.525	13.75
82	<i>E. cansus</i>	M	45.67	41.04	43.79	16.82	7.38	17.39	32.30	23.96	7.92	4.19	9.60	21.21	8.22	11.25	12.09	5.54	9.23	11.83	5.46	27.51	14.19	17.92
132	<i>E. cansus</i>	M	46.68	42.97	45.01	18.24	8.33	17.67	36.07	26.65	6.05	5.75	9.49	22.90	8.63	12.25	11.60	2.50	6.28	11.30	5.80	29.60	16.56	18.33
133	<i>E. cansus</i>	M	44.99	41.39	42.89	15.38	6.97	17.46	30.71	23.97	6.73	5.50	9.60	21.94	9.05	11.61	11.82	4.33	6.49	11.21	5.85	25.77	15.94	17.61
136	<i>E. cansus</i>	M	45.44	40.51	44.06	17.52	7.36	17.73	32.55	24.54	6.75	5.23	9.19	22.17	9.04	12.34	11.83	4.61	8.25	11.81	5.18	28.25	15.60	17.86
140	<i>E. cansus</i>	M	44.95	40.96	43.85	17.89	8.02	18.56	33.09	24.38	7.09	3.81	9.44	22.43	8.43	12.22	12.69	4.91	8.42	12.45	4.99	28.07	16.02	18.58
142	<i>E. cansus</i>	M	43.80	39.70	41.82	16.19	6.70	15.13	32.35	24.21	7.57	4.74	8.87	21.25	8.47	11.58	10.84	5.63	7.78	10.25	5.91	26.36	14.66	15.88
159	<i>E. cansus</i>	M	45.92	41.39	43.91	17.35	7.85	18.05	33.63	24.03	6.50	4.53	9.80	22.38	9.01	11.35	11.17	3.38	6.38	10.98	6.54	28.81	16.01	17.15
165	<i>E. cansus</i>	M	45.87	41.41	44.20	18.95	7.63	18.17	34.75	24.99	5.72	6.15	9.76	22.33	8.91	12.16	12.64	3.34	5.39	12.18	5.68	28.63	15.86	19.00
168	<i>E. cansus</i>	M	47.35	42.50	46.65	17.06	8.70	18.50	34.75	25.80	5.87	4.46	9.74	22.80	9.19	12.52	11.97	1.75	4.32	11.51	5.89	28.96	16.57	18.28
170	<i>E. cansus</i>	M	44.30	39.79	42.80	16.60	7.13	16.70	32.93	23.28	7.09	5.10	9.23	22.23	8.59	12.92	11.89	4.21	7.32	11.88	5.00	26.69	14.83	17.09
176	<i>E. cansus</i>	M	43.36	39.05	42.26	17.26	7.12	17.87	31.50	23.01	7.09	4.19	8.95	20.44	8.30	11.49	11.37	5.25	6.14	10.50	5.23	26.99	15.01	16.81
179	<i>E. cansus</i>	M	45.46	40.51	43.99	16.65	7.25	17.32	31.05	24.25	7.02	5.93	9.15	21.58	8.71	11.33	11.12	4.22	5.97	11.28	5.49	27.48	15.11	17.20
379	<i>E. cansus</i>	M	41.96	38.06	39.29	15	7.08	15.75	31.32	20.95	7.97	4.75	8.93	20.26	9.505	11.77	10.765	5.85	7.84	10.395	5.655	28.025	13.21	15.24
383	<i>E. cansus</i>	M	40.1	36.34	37.26	14.1	7.21	15.49	31.25	19.63	7.73	4.55	8.87	19.97	9.545	11.405	10.335	5.49	7.88	9.92	5.555	27.738	12.765	14.84
259	<i>M. aspalax</i>	F	45.57	41.51	43.24	17.78	8.36	17.24	30.65	22.24	6.69	5	9.44	21.44	9.235	11.31	10.2	5.2	6.91	9.695	6.385	26.105	14.455	16.71
301	<i>M. aspalax</i>	F	42.96	39.14	40.91	16.59	7.45	16.33	29.33	20.15	8.19	4.87	9.9	20.71	9.565	11.025	10.075	6.44	8.34	9.43	5.72	24.845	13.175	15.12
306	<i>M. aspalax</i>	F	36.12	32.66	32.87	14.01	6.5	12.6	31.05	15.32	8.18	2.33	9.29	18.46	9.125	11.085	9.2	7.03	9.47	8.63	5.33	20.19	10.795	12.74
256	<i>M. aspalax</i>	F	44.24	40.94	41.28	17.34	8.05	17.3	30.89	21.78	7.4	4.62	9.2	19.38	9.39	10.375	10.415	6.21	8.01	9.8	5.98	25.435	14.295	16.28
260	<i>M. aspalax</i>	F	44.43	40.84	42.43	17.28	8.22	17.15	30.77	20.87	8.08	4.44	9.71	20.99	9.49	11.045	10.325	5.62	8.01	9.58	6.095	25.825	14.47	16.23
300	<i>M. aspalax</i>	F	44.59	41.05	42.19	17.59	8.36	17.38	30.17	21.71	6.98	4.94	10	22.1	9.63	11.365	10.36	5.32	6.38	9.46	6.43	26.56	14.17	16.01
302	<i>M. aspalax</i>	F	44.57	41	42.72	17.36	8.46	15.97	31.56	22.62	7.16	4.77	10.46	21.43	9.73	11.35	11.3	4.84	5.5	10.495	6.17	26.225	14.54	16.5
295	<i>M. aspalax</i>	F	44.24	41.35	41.86	17.13	8.6	16.63	30.6	20.96	7.34	5.11	10.46	21.84	9.65	11.51	11.07	5.23	6.01	10.105	5.685	26.4	13.645	16.09
297	<i>M. aspalax</i>	F	43.04	39.67	40.39	17.07	7.14	15.9	29.65	21.21	7.77	3.68	9.32	21.02	9.465	11.395	10.375	6.58	7.31	9.525	6.22	24.42	13.77	15.31

Skull Morphology of Zokors

Sample Type	Gender	CL	CB	BL	CH	BNB	LNB	ZB	LMP	OS	SAB	OWU	GMB	BAB	LAB	LLC	SFC	SPC	LUC	LDL	LLJ	LDU	OL	
313	<i>M. aspalax</i>	F	44.81	40.78	41.06	17.39	8.44	16.35	30.75	21.94	7.21	4.85	9.38	20.95	9.82	10.89	9.73	6.06	6.94	8.88	6.265	25.695	14.67	16.2
296	<i>M. aspalax</i>	F	37.45	35.72	41.06	15.16	7.18	14.39	30.89	17.18	8.49	4.37	9.41	21.31	9.51	10.73	9.645	7.29	8.93	8.66	5.765	22.07	11.34	14.17
257	<i>M. aspalax</i>	F	42.53	38.95	40.93	16.74	7.28	15.17	28.89	21.38	7.34	4.23	9.38	20.92	9.7	10.825	10.405	5.52	7.73	9.63	5.51	24.53	13.585	15.44
215	<i>E. rothschildi (ZB)</i>	F	37.16	33.44	34.25	12.68	6.21	15.76	24.95	17.72	6.35	3.09	7.95	16.69	7.265	9.805	10.06	4.33	7.71	9.315	4.565	20.735	11.045	13.26
219	<i>E. rothschildi (ZB)</i>	F	35.31	32.11	33.2	12.61	5.97	11.56	22.36	17.31	5.57	3.76	8.31	15.41	7	9.355	9.77	3.74	7.28	9.275	4.455	19.38	10.84	12.75
321	<i>E. rothschildi (XX)</i>	F	39.8	35.9	36.63	13.95	6.93	15.95	26.32	18.17	6.64	4.35	7.87	18.64	7.2	10.18	10.175	2.36	5.74	9.655	4.575	22.01	12.485	14.05
217	<i>E. rothschildi (ZB)</i>	F	34.77	30.81	31.58	12.82	5.94	14.09	23.74	16.93	6.99	4.3	7.62	15.92	7.03	9.425	8.805	4.92	7.26	8.94	4.435	19.71	10.485	12.16
226	<i>E. rothschildi (XX)</i>	F	35.9	32.72	33.74	13.96	6.23	14.02	24.51	17.28	5.71	4.39	8.52	17.44	8.02	10.79	9.94	3.7	5.07	9.35	4.72	21.69	11.235	13.18
218	<i>E. rothschildi (ZB)</i>	F	36.71	33.41	34.6	12.92	6.27	14.45	25.77	17.5	6.34	4.74	7.72	18.28	7.77	9.96	9.36	3.61	5.71	9.32	4.41	20.975	11.325	12.91
222	<i>E. rothschildi (ZB)</i>	F	36.39	32.95	33.86	12.71	6.03	14.74	23.55	18.51	5.92	4.55	7.6	16.91	7.71	9.33	9.985	3.65	5.12	8.915	4.18	19.17	11.245	12.82
320	<i>E. rothschildi (XX)</i>	F	35.99	32.49	32.6	13.57	5.87	14.23	25.25	16.66	8.64	4.98	7.81	17.42	7.585	10.05	9.45	6.46	10.4	8.69	4.48	19.65	10.775	12.23
220	<i>E. rothschildi (ZB)</i>	F	36.68	33.25	34.45	13	6.6	16.14	25.12	18.43	6.36	4.71	8.51	17.05	7.195	9.65	9.54	4.04	5.5	9.08	5.045	20.74	11.32	13.27
221	<i>E. rothschildi (ZB)</i>	F	36.66	32.97	33.98	13.71	6.22	14.74	23.84	17.36	6.62	4.43	7.28	17.1	7.21	9.67	9.165	5.26	7.89	8.59	4.43	20.225	10.665	13.17
223	<i>E. rothschildi (XX)</i>	F	40.27	36.4	37.64	15.38	6.68	15.57	25.1	19.76	7.51	5.12	8.16	20.22	8.905	11.195	9.99	5.41	8.41	10.29	4.58	22.24	12.11	14.91
216	<i>E. rothschildi (ZB)</i>	F	37.04	33.28	34.6	13.65	6.39	13.81	24.35	18.2	5.66	4.71	7.99	16.44	7.745	10.235	9.885	3.53	5.8	9.46	5.155	20.92	11.595	13.14
339	<i>E. baileyi</i>	F	46	41.68	43.82	16.68	9.54	18.65	27.37	22.35	8.12	5.78	10.02	19.36	9.2	12.595	11.3	3.44	1.3	10.505	7.035	27.39	16.04	16.67
341	<i>E. baileyi</i>	F	38.4	35.13	35.75	14	6.91	14.63	28.05	17.5	8.15	4.98	8.38	18.54	7.99	10.515	9.62	6.55	6.17	9.67	6.05	20.16	12.495	13.69
340	<i>E. baileyi</i>	F	39.47	36.51	36.72	14.86	6.99	14.66	26.92	18.74	7.56	4.94	8.6	18.76	8.15	10.755	9.8	5.5	4.78	9.535	6.325	21.58	13.56	13.92
356	<i>E. baileyi</i>	F	41.18	37.49	38.9	15.23	7.35	16.58	28.62	19.63	7.8	5.47	8.98	18.76	8.795	11.25	10.09	5.59	5.93	9.805	6.415	22.735	14.08	14.45
343	<i>E. baileyi</i>	F	38.29	34.74	35.21	14.41	6.6	14.38	27.27	18.54	8.76	5.06	8.16	18.28	8.395	10.17	9.515	6.61	6.62	9.215	5.985	20.38	12.52	13.93
77	<i>E. cansus</i>	F	42.06	37.62	39.00	16.01	6.42	16.07	30.34	21.61	7.37	3.76	9.42	20.22	7.90	10.66	11.58	4.09	9.54	11.42	5.27	25.93	13.21	17.16
79	<i>E. cansus</i>	F	41.15	36.90	38.70	16.35	6.91	16.00	28.28	21.85	7.27	3.70	9.03	19.42	7.65	10.315	11.425	5.19	9.14	10.70	5.01	25.82	13.235	16.32
83	<i>E. cansus</i>	F	44.22	39.71	41.83	16.60	7.30	17.14	31.68	22.78	7.48	4.10	9.60	21.44	8.655	11.095	11.65	4.73	8.36	11.735	5.105	26.865	13.835	17.22
84	<i>E. cansus</i>	F	39.95	36.05	37.75	15.69	6.91	14.51	28.58	20.80	6.69	4.32	8.90	20.95	7.65	10.785	11.56	5.50	6.52	10.895	4.9	24.3	12.735	16.21
131	<i>E. cansus</i>	F	40.57	37.03	39.92	15.66	6.65	14.94	26.31	21.75	7.48	3.38	8.68	20.93	8.22	10.98	10.98	5.65	8.08	10.49	5.70	24.91	14.33	15.61
137	<i>E. cansus</i>	F	40.20	36.23	38.28	15.00	6.19	14.89	28.46	21.18	7.68	3.58	9.15	19.48	8.35	10.65	10.61	7.12	8.93	10.31	5.70	25.31	14.46	15.74
138	<i>E. cansus</i>	F	42.87	38.87	41.11	16.36	7.04	15.88	29.07	23.10	7.16	7.16	9.33	20.82	8.61	11.67	11.92	6.34	7.50	10.83	5.76	26.78	14.59	15.80
141	<i>E. cansus</i>	F	40.75	37.12	39.37	15.58	6.87	15.55	29.40	21.85	6.90	4.53	8.60	20.17	8.50	10.81	10.51	6.09	8.68	10.19	6.06	25.35	14.49	16.13
143	<i>E. cansus</i>	F	42.06	38.50	41.28	15.67	6.86	14.02	30.53	22.28	6.20	3.79	9.55	20.50	8.29	11.08	11.60	4.19	6.63	11.20	6.17	26.42	14.79	16.15
146	<i>E. cansus</i>	F	41.43	37.25	39.75	15.90	6.40	15.67	28.78	22.65	5.59	8.96	9.01	20.60	8.39	11.00	11.03	3.15	6.87	10.92	5.94	24.90	10.79	16.82
147	<i>E. cansus</i>	F	40.30	37.13	38.55	15.04	6.55	15.16	27.80	21.35	7.50	6.30	8.99	20.60	8.58	10.32	10.55	7.09	9.88	10.58	6.00	24.67	13.37	15.90
148	<i>E. cansus</i>	F	42.72	38.27	40.26	16.00	7.00	15.69	29.86	23.30	7.32	4.11	9.17	21.23	8.61	11.56	11.82	6.53	7.66	10.82	5.21	26.60	15.51	16.98
150	<i>E. cansus</i>	F	41.76	37.52	39.39	15.58	6.59	15.82	28.72	22.75	6.95	4.88	8.72	21.27	8.71	11.59	11.49	6.50	7.85	10.68	5.23	25.17	14.24	15.70
152	<i>E. cansus</i>	F	43.08	39.12	41.17	16.60	7.20	15.80	30.99	23.32	6.45	6.32	9.70	21.70	8.67	11.71	11.82	4.81	7.11	5.88	5.76	26.72	15.39	17.16
153	<i>E. cansus</i>	F	41.38	37.02	39.55	15.79	6.88	16.55	28.55	22.95	7.29	5.92	8.70	21.05	8.01	10.50	10.75	6.31	7.86	10.32	5.50	25.84	15.17	15.45
154	<i>E. cansus</i>	F	40.78	36.83	38.62	15.13	6.30	14.84	29.22	21.34	8.35	3.50	8.55	20.15	8.39	10.84	10.82	6.75	7.67	10.34	4.79	24.41	14.72	15.39
155	<i>E. cansus</i>	F	39.39	35.49	36.83	14.79	6.80	15.85	26.15	20.64	8.03	3.15	9.47	20.72	8.36	10.62	11.15	7.70	8.86	10.54	5.34	24.57	13.36	14.95

Sample Type	Gender	CL	CB	BL	CH	BNB	LNB	ZB	LMP	OS	SAB	OWU	GMB	BAB	LAB	LLC	SFC	SPC	LUC	LDL	LLJ	LDU	OL	
157	<i>E. cansus</i>	F	40.35	36.69	38.25	15.80	6.80	15.82	27.55	20.45	7.62	4.35	9.03	20.40	7.98	10.84	10.58	6.93	9.43	10.46	5.38	24.80	14.45	15.20
158	<i>E. cansus</i>	F	42.75	37.99	40.57	16.05	7.54	15.57	30.39	23.13	7.53	3.96	8.75	20.50	7.58	10.66	11.02	5.09	7.57	11.05	5.76	27.07	15.03	16.04
160	<i>E. cansus</i>	F	41.68	37.60	39.95	15.55	6.65	16.11	29.25	21.40	7.24	3.76	9.25	20.82	8.22	11.61	11.44	6.24	7.96	11.11	6.49	26.74	15.01	15.87
162	<i>E. cansus</i>	F	42.88	38.80	40.62	15.98	6.80	16.30	32.85	22.60	6.53	3.32	9.78	21.58	8.35	10.94	12.08	3.80	6.93	11.36	6.09	26.82	15.27	17.38
163	<i>E. cansus</i>	F	41.60	37.21	39.96	15.29	6.46	15.90	29.28	22.46	7.40	4.46	9.19	20.50	8.72	11.08	11.09	4.59	8.26	10.60	6.08	25.81	14.28	15.34
164	<i>E. cansus</i>	F	42.58	37.93	40.72	16.02	7.56	17.37	30.73	21.87	6.77	4.35	9.15	21.20	8.84	11.72	11.79	3.75	6.05	11.21	5.54	26.73	14.80	16.61
166	<i>E. cansus</i>	F	42.56	37.93	40.53	16.57	6.58	16.36	30.10	22.78	6.58	4.40	8.85	21.65	8.43	11.48	11.27	5.21	6.56	10.69	5.61	26.17	15.14	16.83
167	<i>E. cansus</i>	F	42.55	38.40	40.89	15.97	6.72	15.96	29.09	22.92	6.95	5.83	9.40	21.90	8.63	11.46	11.42	4.16	8.75	11.28	5.63	25.91	14.15	15.54
169	<i>E. cansus</i>	F	40.27	37.35	40.03	15.66	6.99	16.22	29.10	22.11	6.58	6.12	9.02	20.25	8.15	10.87	10.85	4.86	8.44	10.85	6.31	25.71	14.42	15.95
173	<i>E. cansus</i>	F	41.95	37.06	39.48	15.75	7.01	16.26	30.15	22.80	7.10	5.47	8.98	20.86	8.03	11.00	11.01	5.72	8.24	10.68	4.54	25.93	14.32	15.92
174	<i>E. cansus</i>	F	42.56	38.60	41.28	15.90	7.30	16.05	32.20	22.46	6.60	4.70	9.44	21.60	8.87	11.33	11.74	3.74	8.84	11.16	5.34	27.09	14.24	16.98
175	<i>E. cansus</i>	F	40.98	37.78	38.34	18.15	7.04	15.85	30.50	21.53	6.87	4.40	9.28	21.76	8.90	11.23	10.97	4.91	7.79	10.75	6.36	25.99	14.61	17.30
177	<i>E. cansus</i>	F	40.58	36.34	39.10	15.83	6.37	15.75	29.42	20.96	7.30	3.37	8.89	19.60	7.93	10.71	11.32	5.39	7.93	10.86	5.09	25.41	13.88	16.91
178	<i>E. cansus</i>	F	40.87	36.97	39.45	15.91	6.80	15.73	28.12	21.46	7.10	3.83	9.35	21.08	8.49	11.39	11.01	6.13	8.70	10.85	5.71	26.40	14.09	15.68
180	<i>E. cansus</i>	F	41.57	37.68	39.28	17.15	7.50	15.73	31.18	21.88	6.95	5.90	9.92	21.35	8.27	11.19	11.77	5.08	9.00	11.22	5.34	26.26	13.97	16.44
378	<i>E. cansus</i>	F	42.19	38.45	39.41	16	6.61	16.43	29.74	21.3	7.21	5.16	9.36	21.71	9.3	11.495	10.815	5.36	7.45	10.43	5.56	27.995	14.18	14.97
382	<i>E. cansus</i>	F	41.92	38.15	40.44	15.63	6.78	16.5	29.6	21.92	6.95	4.24	9.53	20.22	9.36	11.765	11.215	4.64	6.92	10.795	5.495	28.145	13.975	15.55
387	<i>E. cansus</i>	F	42.65	38.48	40.89	15.52	7.38	15.78	28.72	21.77	5.89	4.08	8.86	20.63	9.4	11.795	10.9	4.48	6.49	10.68	5.63	28.155	13.9	15.53
380	<i>E. cansus</i>	F	42.82	39.22	40.77	15.96	7.07	16.7	29.34	21.94	5.75	4.68	9.29	20.94	9.61	11.58	11.06	3.99	6.35	10.825	6.2	28.512	14.545	16.12
384	<i>E. cansus</i>	F	43	39.46	41.27	15.49	6.82	15.74	30.37	22.12	6.68	4.21	8.9	20.46	9.685	11.26	10.735	3.63	5.4	10.94	5.89	28.415	14.545	15.89
385	<i>E. cansus</i>	F	38.09	34.53	35.59	14.19	6.47	14.16	24.47	18.44	7.13	4.39	8.54	19.66	9.425	10.87	9.875	5.4	8.07	9.88	5.24	27.56	12.025	14.85
386	<i>E. cansus</i>	F	38.02	34.45	35.42	13.67	6.32	13.55	28.85	18.69	7.3	3.83	8.41	18.66	9.395	10.85	9.675	5.5	7.73	9.725	5.245	27.485	11.93	13.84
253	<i>M. aspalax</i>	M	45.29	40.91	42.7	18.12	8.1	17.82	34.65	21.42	8	4.85	9.53	20.74	9.485	11.595	10.45	5.82	6.95	9.74	6.7	25.99	14.435	16.82
309	<i>M. aspalax</i>	M	47.34	43.96	44.51	22.54	8.68	19.2	34.66	22.48	8.54	5.23	10.04	21.44	9.57	11.35	10.405	5.86	6.82	9.825	7.025	27.79	15.49	16.96
262	<i>M. aspalax</i>	M	49.3	45.92	46.67	19.83	9.67	19.75	34.61	23.56	7.48	5.1	10.63	21.11	9.57	11.81	11.855	4.62	4.31	11.015	6.515	29.705	16.09	18.48
258	<i>M. aspalax</i>	M	45.89	43.95	45.78	18.88	8.22	16.67	33.94	21.23	8.44	5.35	9.94	21.23	10.02	11.23	10.475	5.54	6.12	9.635	6.095	24.28	13.74	15.2
252	<i>M. aspalax</i>	M	46.65	42.79	43.59	18.46	8.97	17.98	35.06	22.52	7.19	4.66	11.2	22.04	9.46	11.425	11.35	5.72	6	10.535	6.685	29.03	14.865	16.43
261	<i>M. aspalax</i>	M	37.3	34.16	34.26	13.93	6.99	13.61	34.23	17.24	8.07	4.05	9.14	18.92	9.545	10.73	9.595	6.43	6.31	8.88	5.775	22.14	11.265	13.83
298	<i>M. aspalax</i>	M	47.2	42.52	43.66	18.98	8.96	19.25	34.89	22.53	7.76	4.85	9.96	21.7	10.29	11.38	11.185	5.44	6.86	10.21	6.585	27.325	14.585	17.14
254	<i>M. aspalax</i>	M	49.43	45.91	46.41	19.92	9.65	18.29	33.76	23.62	7.36	5.42	9.6	23.12	10.59	11.64	11.34	5.31	4.48	10.98	6.335	28.89	16.37	17.74
317	<i>M. aspalax</i>	M	44.43	40.85	41.55	17.3	8.64	16.51	33.45	21.31	7.42	5.31	9.85	21.49	9.625	10.72	10.865	6.23	7.75	10.115	6.355	25.64	14.305	16.8
312	<i>M. aspalax</i>	M	45.91	42.07	43.07	18.13	8.17	16.2	35.58	21.94	7.31	4.91	9.54	22.23	9.76	12.36	10.185	6.35	7.12	9.565	6.55	26.895	19.125	14.93
308	<i>M. aspalax</i>	M	48.11	44.62	45.4	20.21	8.74	19.44	34.73	22.78	7.17	5.14	9.73	22.05	9.68	11.115	10.64	5.13	6.46	10.16	6.49	28.835	15.29	16.53
303	<i>M. aspalax</i>	M	41.64	38.02	39.02	16.62	7.28	14.61	33.94	19.77	7.66	4.23	9.6	19.66	9.825	10.755	10.295	6.02	7.46	9.7	5.16	23.65	12.82	14.95
307	<i>M. aspalax</i>	M	48.1	44.04	45.7	19.89	9.51	19.03	34.49	24.06	7.53	5.14	9.9	22.29	9.565	11.175	11.39	4.8	5.03	10.38	6.66	30.82	15.37	17.44

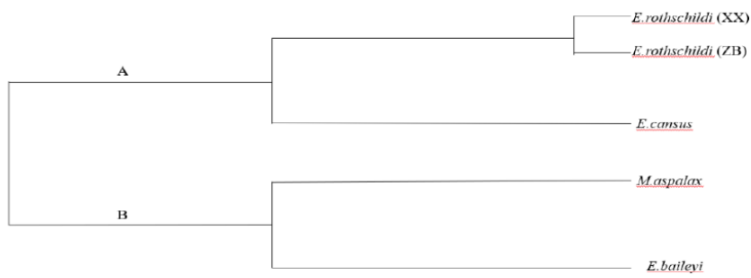
Supplementary Table II.- Significance level of differences of linear measurements of females between pairwise populations.

Pairwise p-value measurement	EC-ER2	EC-ER1	EC-MA	EC-EB	ER2-ER1	ER2-MA	ER2-EB	ER1-MA	ER1-EB	MA-EB	Sum	Proportion of significance level (p<0.05)
CL	0.000	0.008	0.341	1.000	1.000	0.000	0.002	0.000	0.404	0.332	3.087	50%
BL	0.000	0.008	0.017	1.000	1.000	0.000	0.022	0.000	0.227	0.125	2.399	60%
CB	0.000	0.008	0.010	1.000	1.000	0.000	0.000	0.000	0.199	0.116	2.333	60%
ZB	0.000	0.005	0.081	0.130	1.000	0.000	0.130	0.000	1.000	0.002	2.348	50%
LLJ	0.000	0.001	0.097	0.016	1.000	0.002	0.481	0.318	1.000	1.000	3.915	40%
LMP	0.000	0.000	0.037	0.073	1.000	0.092	1.000	0.227	1.000	1.000	4.429	30/5
GMB	0.000	0.012	1.000	0.007	0.761	0.000	0.391	0.003	1.000	0.002	3.176	60%
OL	0.000	0.002	1.000	0.138	1.000	0.000	0.250	0.075	1.000	1.000	4.465	30%
LNB	0.082	1.000	1.000	1.000	1.000	0.012	0.505	0.282	1.000	1.000	6.881	10%
CH	0.000	0.030	0.002	1.000	0.820	0.000	0.013	0.000	1.000	0.012	2.877	70%
LDU	0.000	0.005	1.000	1.000	1.000	0.003	0.009	0.212	0.186	1.000	4.415	40%
LAB	0.000	0.220	1.000	1.000	0.023	0.000	0.000	0.425	1.000	1.000	4.668	40%
LLC	0.000	0.000	0.000	0.001	1.000	0.066	1.000	1.000	1.000	1.000	5.067	40%
LUC	0.000	0.006	0.000	0.027	1.000	1.000	0.821	1.000	1.000	1.000	5.854	40%
OWU	0.000	0.000	0.002	1.000	1.000	0.000	0.002	0.000	0.102	0.004	2.11	70%
BAB	0.000	0.199	0.000	1.000	0.646	0.000	0.001	0.000	0.819	0.002	2.667	60%
BNB	0.000	0.255	0.000	0.442	1.000	0.000	0.000	0.000	0.019	1.000	2.716	60%
OS	0.012	1.000	0.075	0.005	0.179	0.000	0.000	1.000	0.217	1.000	3.488	40%
SPC	0.098	1.000	1.000	0.000	1.000	1.000	0.335	1.000	0.056	0.005	5.494	20%
LDL	0.000	0.000	0.073	0.002	1.000	0.000	0.000	0.000	0.000	0.731	1.806	70%
SFC	0.077	1.000	0.715	1.000	1.000	0.005	0.262	0.223	1.000	1.000	6.282	10%

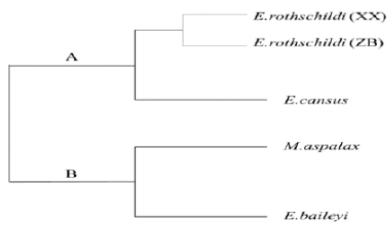
EC, ER2, ER1, MA and EB represents *E. cansus*, *E. rothschildi* (code: XX), *E. rothschildi* (code: ZB), *M. aspalax*, and *E. baileyi*, respectively.



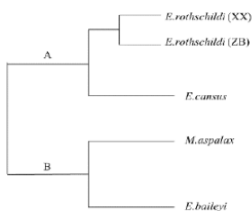
based on 22 measurements



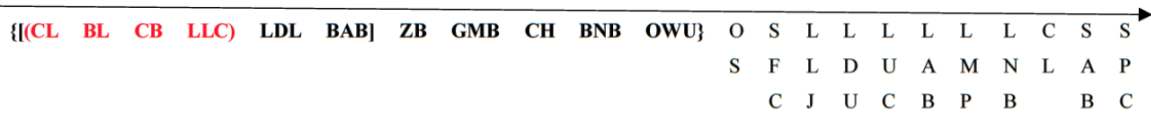
{based on 11 measurements}



[based on 6 measurements]



(based on 4 measurements)



Supplementary Fig. 2. The minimum number of linear measurements for cluster analysis in females.